



## ABOUT US

**RESS is a certified BZEE and GWO partner in Romania, to offer skills development trainings for technicians working in the Renewable Industry for Wind and PV.**

The **BZEE** Global Training Partnership delivers wind energy skills at 35 locations worldwide and boasts a track record of over 5000 highly qualified wind energy technicians. Currently approx. 2000 skilled company staff per year undergo GWO trainings focused on the specific environment of wind turbines.

Starting October 2016, RESS has delivered some additional courses for blade inspection and repairs, electrical equipment and other courses required by the industry or the local authorities.

**Renewable Energy School of Skills (RESS)** is the leading consultancy, innovation and technology company for wind energy in South-East Europe, working with more than 75% of the market, WPE has acquired knowledge in turbine operation technique, now operating also the largest private dispatch center in Romania with more than 900MW under technical management. As a consultancy company, WPE learned how to train people in new areas.

Our Energy School of Skills aims to become the biggest training school in South -East Europe and together with BZEE's commitment to Real Turbine Learning our target is to improve Turbine Operation all over Europe.

In 2019 the training center was also certified to perform trainings in remote locations with the New GWO Mobile Training Facility certified in April.



## AVAILABLE TRAINING MODULES

### Key RESS Academy Services include:

- Development of specialized wind energy training equipment
- Module testing under real life conditions
- Development of manufacturer-specific safety and rescue concepts
- Customized training sessions tailored to stakeholder requirements

**RESS** staff are a group of specialists committed to serving the qualification needs of the wind energy supply chain. **RESS and BZEE** instructors have career backgrounds in wind turbine manufacture, turbine installation and maintenance, condition monitoring, commissioning and decommissioning in both onshore and offshore environments, rescue operations and accident prevention.

The following courses are offered throughout the Global Training Partnership and can be also organized with our GWO Mobile Training Facility (MTF) at a specified location, worldwide:

| GWO MODULES                               |                                       |
|---|---------------------------------------|
| Basic Safety Training – BASIC & REFRESHER | Basic Technical Training              |
| First Aid for working at height           | Basic Technical Training Mechanical   |
| Working at heights and rescue training    | Basic Technical Training Electrical   |
| Fire awareness and fire-fighting          | Basic Technical Training Hydraulic    |
| Manual handling                           | Basic Technical Training Installation |
| Sea Survival                              |                                       |

| ISCIR MODULES                               |
|---|
| RSVTI Operator – B module – reauthorisation |
| RSVTI Operator – A module                   |

| TURBINE TECHNICIAN TRAINING - BASIC                      |
|--|
| Wind Turbine Basic                                       |
| Technical English Basic                                  |
| Hazardous Handling - Online training                     |
| Basic Electric / Earthing Protection – Specific Training |
| Electrical wrenches                                      |
| Renewable energy operator – advanced course              |
| Renewable energy Operator – specialization course        |

| ELECTRICAL and HYDRAULICAL TRAINING  |
|--|
| Medium and High Voltage Switching up to 52kV                                   |
| Hydraulic torqueing & tension bolted connection techniques – Specific Training |



## FIRST AID FOR WORKING AT HEIGHT



### **Basics / Refresher**

This course applies common procedures for granting first aid in the field of wind turbines.

Reactions are underlined mostly, efficient in case of accidents at work, granting first aid and the execution of rescue measures onsite according to the restrictions from the wind turbines field.

Legal requirements and standard procedures are described in this module, which is a prerequisite for all works related to wind turbines.

## WORKING AT HEIGHTS AND RESCUE TRAINING



### **Basics / Refresher**

The training session allows the participant to carry out rescue operations in wind turbines in a safe way.

The module includes PPE handling, maintenance and inspection.

This module is a prerequisite for any work on wind turbines.

## FIRE AWARENESS AND FIRE-FIGHTING



### Basics / Refresher

This module gives an overview of the causes of fire and preventative fire protection measures. Participants are taught to extinguish naked flames with various kinds of extinguishers.

## MANUAL HANDLING



### Basics / Refresher

This module addresses to all the people engaged in activities like: administration, production, management, service and maintenance related to wind turbines.

Lifting and transport result in considerable pressures on the human body.

Participants are trained to recognize and evaluate possible pressure on the musculoskeletal system appearing during work.

Participants are introduced to the ergonomic work procedures through practical exercises.

## GWO Mobile Training Facility – MTF for Basic Safety Courses



### GWO Mobile Training Facility - MTF

RESS can now offer at the same level of quality in a preferred location anywhere in the world, the full GWO Basic Safety Trainings. This can help you in case you quickly need to organise for a unscheduled project or for a new team on site. In order to achieve the goal of remote training as a GWO Mobile Training Facility, this mobile facility has been designed to assure the center, trainers and trainees the following characteristics :

- ✓ Portability;
- ✓ Mobile and not a permanent location;
- ✓ Adaptable to the training needs;
- ✓ GWO and BZEE course compliance;

## SEA SURVIVAL



### Basics / Refresher

The aims of this BST Sea Survival course are, by theoretical and practical training to give the participants the basic knowledge and skills to act safely and take the correct preventive actions in all aspects of offshore operations from shore to installation vessel or WTG and vice versa, both during normal operation and in an emergency in an offshore wind energy environment.



## **BASIC TECHNICAL TRAINING – MECHANICAL / ELECTRICAL / HYDRAULIC / INSTALLATION**

### **BTT MECHANICAL**

The aim of the BTT Mechanic Module is to give the Delegates the knowledge and skills to carry out basic mechanical tasks (supervised by an experienced technician), using safe working procedures and the correct PPE.



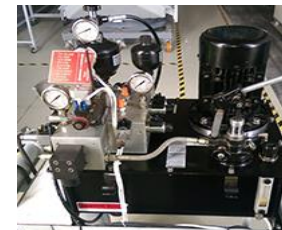
### **BTT ELECTRICAL**

The training session allows the participant to gain basic electrical skills in order to perform regular jobs in the proximity of electrical installations as well as simple electrical procedures and measurements.



### **BTT HYDRAULIC**

The aim of the BTT Hydraulic Module is to give the Delegates the knowledge and skills to carry out basic hydraulic tasks (supervised by an experienced technician), using safe working procedures and the correct PPE.



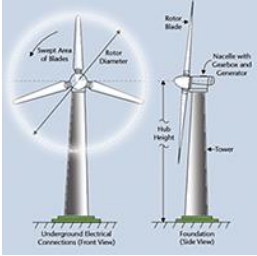
### **BTT INSTALLATION**

The aim of this BTT Installation Module is to give the Delegates the knowledge and skills to carry out basic installation tasks (supervised by an experienced technician), using safe working procedures and the correct PPE.





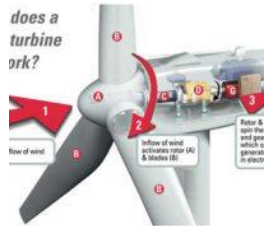
## WIND TURBINE BASIC



The training session allows the participant to have an overview of wind turbines, from the point of view of the history, component and principle of operation.

This module is a prerequisite for any work on wind turbines.

## TECHNICAL ENGLISH BASIC



The training session allows the participant to use the specific vocabulary for the WTG field of activity. The module includes a small introduction in wind turbines and a vocabulary part.

## HAZARDOUS HANDLING – online training



This module provides a comprehensive introduction to hazardous materials and their classification. The focus is on those hazardous materials used in both the production and maintenance of wind turbines. Participants learn how to work with safety data sheets, standard operating procedures and instructions.

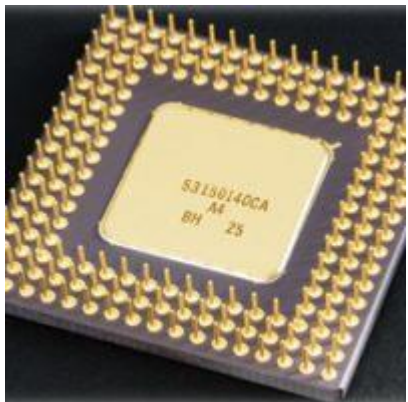
## ELECTRICAL WRENCHES



Overview of the techniques for using electrical wrenches. Instructions about choosing the appropriate electrical wrenches.

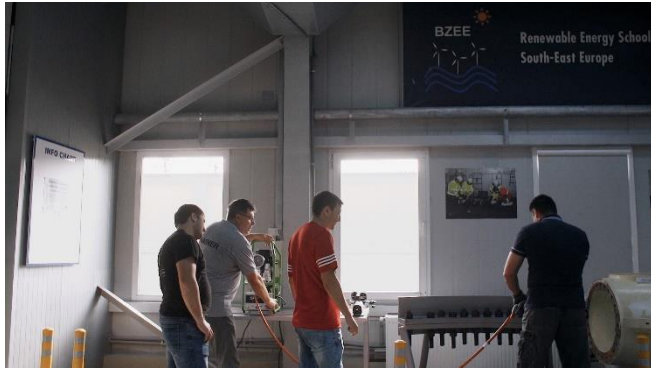
Using the electrical wrenches.

## BASIC ELECTRIC PROTECTION / EARTHING – specific training



The training session allows the participant to gain basic electrical skills in order to perform regular jobs in the proximity of electrical installations as well as simple electrical procedures and measurements.

## RENEWABLE ENERGY OPERATOR – specialization course



This module provides a comprehensive introduction to the domain-specific Regulations on Health and Safety at Work, Fire Protection and Fire-Fighting and Environmental Protection. The training session allows the participant to gain necessary skills in order to perform technical drawings and electrical/mechanical schemes, to correctly use measurement and monitoring equipment, to properly operate electrical installations. The module provides an overview of the renewable sources of electrical and thermal energy, knowledge about maintenance of renewable energy power generation systems and measurement and monitoring equipment, as well as allows the participant to learn to perform operational data reporting.

## RENEWABLE ENERGY OPERATOR – advanced course



This module provides a comprehensive introduction to the domain-specific Regulations on Health and Safety at Work, Fire Protection and Fire-Fighting and Environmental Protection. The training session allows the participant to gain necessary skills in order to properly perform quality management.



## RSVTI Operator – A module



This module, allows participants to obtain a authorization which grants the right to be employed and to act as “lifting and under pressure equipment responsible” according to Romanian legislation in regards to lifting equipment inside wind turbines and not only.

The courses are specific for the Romanian legislation and are only available in Romanian language.

## RSVTI Operator – B module -reauthorisation



This is a refresher training for Module A.  
Initial authorization is valid for 4 years.

## MEDIUM AND HIGH VOLTAGE SWITCHING UP TO 52KV



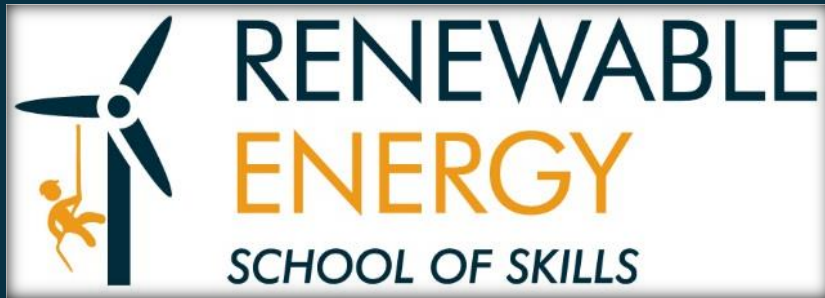
The training session allows the participant to gain electrical skills in order to perform maneuvers on medium and high voltage lines.  
The training applies to certified electricians.

## HYDRAULIC TORQUEING & TENSION BOLTED CONNECTION TECHNIQUES – Specific Training



Overview of the techniques for using torque wrenches, hydraulic wrenches and tensioning devices.  
Instructions about choosing the appropriate torqueing device in the controlled bolting.  
Using the torque wrenches and tensioning devices.

## BOOK YOUR TRAINING AT RESS **TODAY!**



### **GIORGIANA ALEXE**

Training Center Manager

Phone: +40 741 224 496

### **ALINA LUPASCU**

Course Coordinator

Phone: +40 743 20 32 84

### **Headquarters:**

480 Tomis Bvd., 900519, Constanta  
Romania

Fax: +40 241 550 323

E-mail: [office@gwo-training.eu](mailto:office@gwo-training.eu)

Web: [www.gwo-training.eu](http://www.gwo-training.eu)

Partner of



[gwo-training.eu](http://gwo-training.eu)  
+40 241 55 03 53

